

	Park Hierarchy	Strategic Direction *	Low Impact on Existing Open Space	Low Impact on Environment	Low Impact on Residents	Car Parking Available on Street	Car Parking Opportunities	Not Impacted by Flooding (in10 events)	Access to Neighbourhood *
1 - Wonga Park (Fenced)	Local	✓*	✓*	✓	✓	✓	✓	✓	11%
2 - Tea Tree Park 1 (Fenced)	District	✓	✓	✓	✓	✓	✓	✓	13%
3 - Tea Tree Park 2 (Fenced)	District	✓	✓	✓	✓	✓	✓	✓	13%
4 - Stevens Street Reserve (Fenced)	Street Reserve		✓	✓	✓	✓	✓	✗	28%
5 - Christina Low Park (Unfenced)	District	✓*	✓	✗	✓	✓	✓	✗	15%
6 - Koongalba Street Park (Unfenced)	Landscape Corridor		✓	✓	✓	✓	✓	✓	9%

* Percentage (%) of residences within walking distance (500m)
 * Based on surrounding park network

* Optional - where does not compromise park function.
 * As per strategic direction set in Sunshine Coast Councils Recreational Parks Plan



1 - Wonga Park



2 - Tea Tree Park 1



3 - Tea Tree Park 2



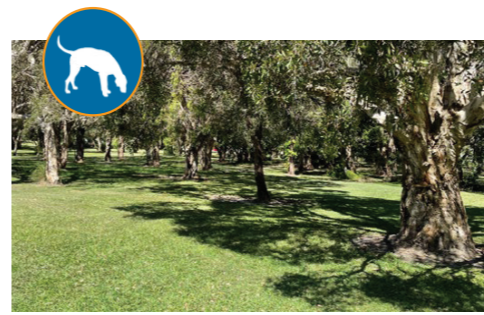
4 - Stevens Street Reserve



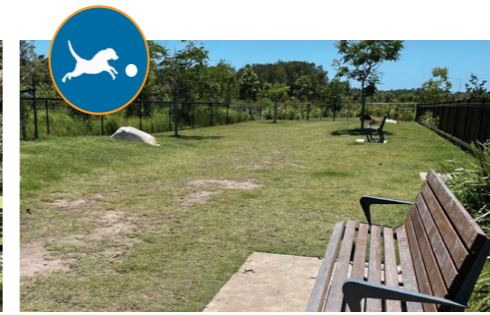
5 - Christina Low Park



6 - Koongalba Street Park



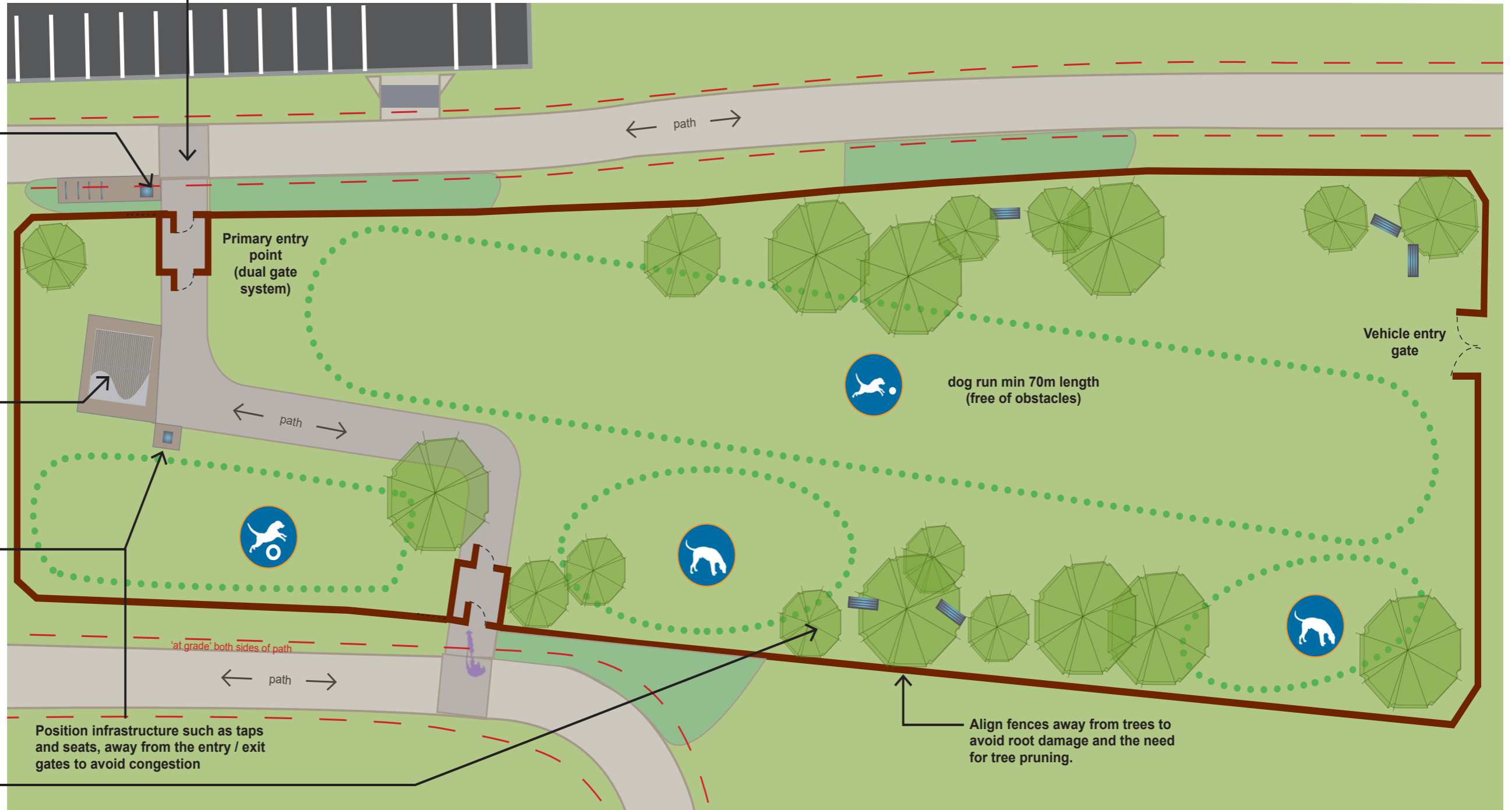
Dog exploring area



Dog run area



Dog agility equipment area



Position infrastructure such as taps and seats, away from the entry / exit gates to avoid congestion

Align fences away from trees to avoid root damage and the need for tree pruning.